

WELCOME TO LITTLE LADIES SOCIETY!

We are so pleased that you are a part of LLS.
Here is your very first Earth-friendly craft project.



IMPORTANT:

Be sure and ask an adult for help since this project uses scissors and a safety pin which can be dangerous.



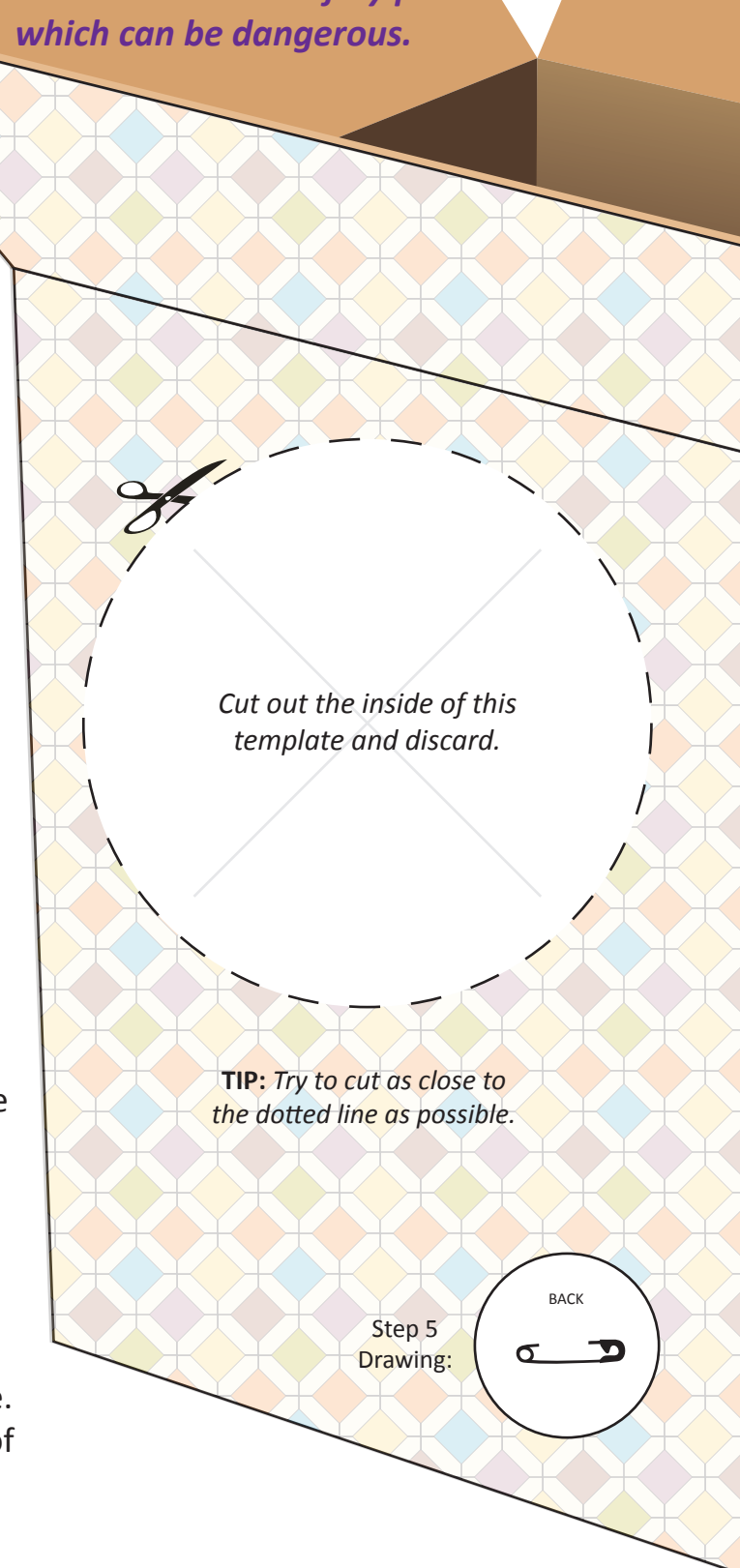
TIP: Try to cut along the edge of the badge, not directly on the dotted line.

YOU WILL NEED:

- One piece of white card stock (plain printer paper can be used)
- One empty cereal box or snack food box
- Scissors
- Glue stick
- One large safety pin

INSTRUCTIONS:

- (1) Print this page on a piece of card stock (or paper).
- (2) Carefully cut out your new LLS Member badge. Look, it's your favorite color!
- (3) Carefully cut out the **inside** part of the white circle that is on the picture of the box. You will use this outline as a template to mark the cereal box.
- (4) Lay the template over the empty cereal box and make light marks where to cut.
- (5) Carefully cut out the cardboard circle.
- (6) Use the glue stick to glue your printed LLS Member Badge onto the front of the cardboard circle.
- (8) Take the safety pin and attach it to the back side of the cardboard circle. Refer to the drawing -->
- (9) Pin the badge to your shirt, jacket, backpack...or wherever you choose!



Cut out the inside of this template and discard.

TIP: Try to cut as close to the dotted line as possible.

Step 5
Drawing:

